

Harvard²

Cambridge, Boston, and beyond



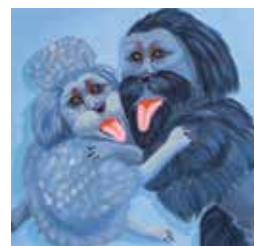
I2H A Wintry Jaunt to Newport, Rhode Island
Experience the city's elemental beauty, art, history, and food—without the crowds



I2B Extracurriculars
Events on and off campus in January and February



I2D Nigerian Women Speak Out
A.R.T. hosts “HEAR WORD!”



I2F Tastemakers
Exploring the Museum of Bad Art, in Somerville



I2L Chinatown Chow
Shōjō's Asian-fusion tapas with a Western kick

COURTESY OF DISCOVER NEWPORT



Extracurriculars

Events on and off campus during January and February

EXHIBITIONS & EVENTS

Houghton Library

www.houghton75.org

Rethinking Enlightenment: Forgotten Women Writers of Eighteenth Cen-

tury France includes Olympe de Gouges, author of the “Declaration of the Rights of Woman and the Female Citizen,” and Émilie du Châtelet, translator of Isaac Newton’s Principia. (Opens January 5)

Landmarks:

From left: An image of diverse microbe colonies obtained from cabbage and grown in the lab, at the Harvard Museum of Natural History; Sumac with Snail, by James Reis, at the Arnold Arboretum; East Coker (2013), by abstract artist Joe Bradley, at the Rose Art Museum

Maps as Literary Illustration features more than 60 documents depicting imagined places, from Thomas More’s Utopia to the Stillness supercontinent in N.K. Jemisin’s The Fifth Season. (Opens January 16)

Carpenter Center for the Visual Arts

https://carpenter.center

Artist, writer, and filmmaker Renée Green’s two-year residency—spent exploring perceptions of time, space, and place—culminates with a display of video installations and screen prints.

(Opens February 1)

FROM LEFT: COURTESY OF THE HARVARD MUSEUM OF NATURAL HISTORY; JAMES REIS/COURTESY OF THE ARNOLD ARBORETUM; JOE BRADLEY/COURTESY OF THE ROSE ART MUSEUM



THE CATERED AFFAIR

IS THE CATERER FOR THE HARVARD ART MUSEUMS


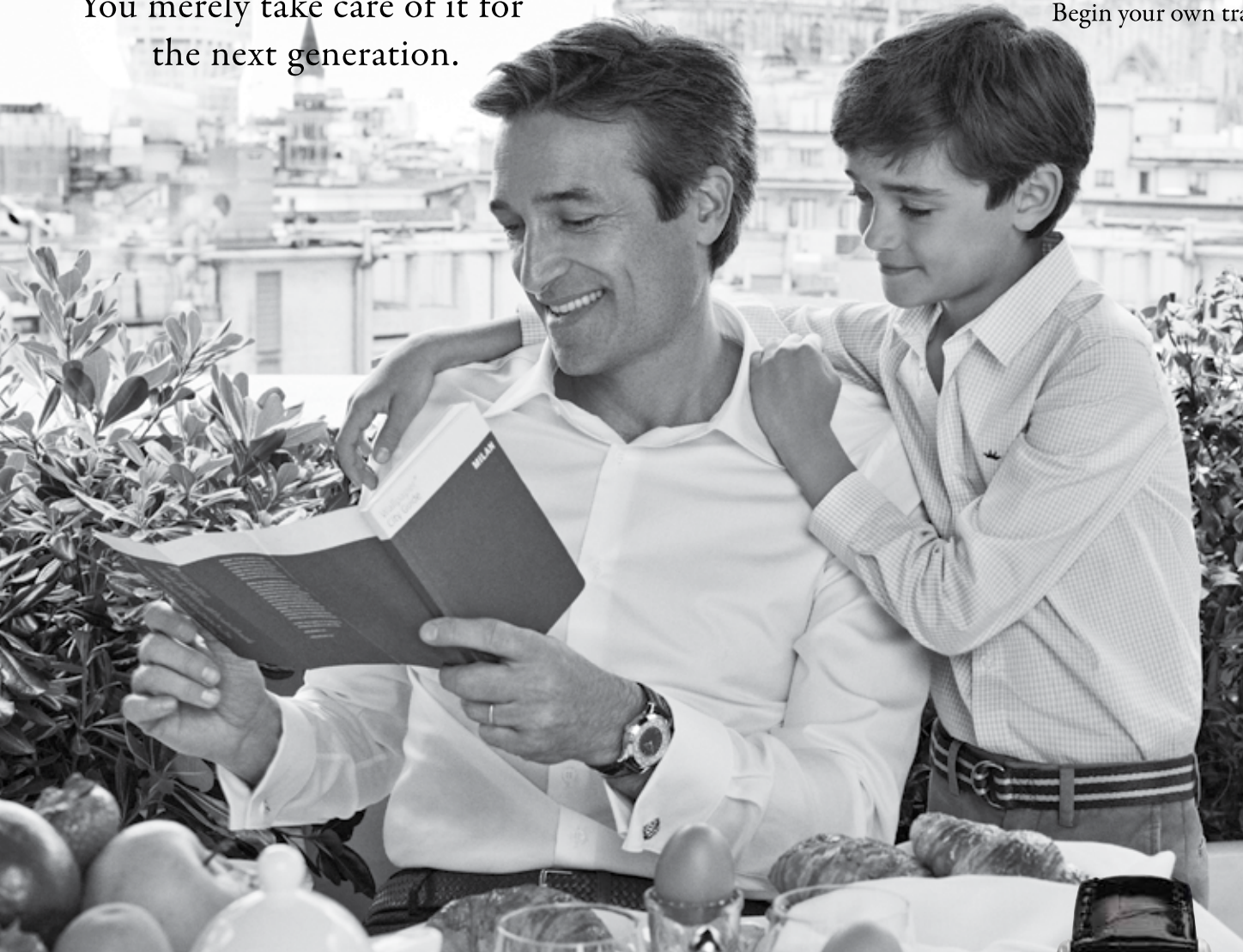
781.763.1333 | THECATEREDAFFAIR.COM/HARVARDARTMUSEUMS | f @ THECATEREDAFFAIR

Artwork: Triangle Constellation by Carlos Amorales



You never actually own
a Patek Philippe.

You merely take care of it for
the next generation.




LUX BOND & GREEN

JEWELERS SINCE 1898

416 Boylston Street • BOSTON 617-266-4747

World Time Ref. 5230G



PATEK PHILIPPE

GENEVE

Begin your own tradition.

Pioneering new-media artist and filmmaker **Lynn Hershan Leeson**—known for exploring privacy, identity, and human rela-

tionships with machines in the context of the digital age—discusses her work. (February 8) The lecture occurs in conjunction

STAFF PICK: Nigerian Women Speak Out

HEAR WORD! Naija Woman Talk True, directed by Ifeoma Fafunwa (a current Radcliffe Institute fellow), is a dynamic performance piece inspired by a spectrum of true stories about women across Nigeria. Nigerian actresses combine dances, songs, and spoken word in intimate portrayals of struggles—for dignity, independence, and professional/meaningful engagement in African society. Themes both personal and universal are candidly broached in an effort to break through a culture of silence. The production, hugely popular in Lagos, had its American premiere at the Harvard Dance Center in 2016, and returns for a two-week run at the American Repertory Theater. Fafunwa also discusses “Who Would Choose to Be LGBT and Nigerian!?” at the institute’s Knafel Center on February 7.

Loeb Drama Center
January 26-February 11

with **Art in the Age of the Internet: 1989 to Today**, opening at the Institute of Contemporary Art on February 7.

Harvard Art Museums
www.harvardartmuseums.org
Inventur—Art in Germany, 1943-55 highlights more than 170 works, many never before seen outside Germany, that were created during a time of collective cultural reckoning. (Opens February 9)

Harvard Museum of Natural History
www.hmn.harvard.edu
Microbial Life: A Universe at the Edge of Sight takes visitors on a multimedia journey from a typical kitchen countertop into the fascinating lives of earth’s first inhabitants. (Opens February 17)

Rose Art Museum
www.brandeis.edu/rose
The exhibit **Joe Bradley** features two dozen works by the New York-based artist (who was born in Maine), from impromptu drawings to bold, layered abstract paintings. (Opens January 28)

COURTESY OF THE AMERICAN REPERTORY THEATER

LECTURES
Wide Angle: The Norton Lectures on Cinema
www.mahindrahumanities.fas.harvard.edu
Three legendary filmmakers are slated to speak at Sanders Theatre: **Frederick Wiseman** (January 29 and February 5); **Agnes Varda** (February 26-27); and **Wim Wenders** (April 2 and April 9).

The Radcliffe Institute for Advanced Study
www.radcliffe.harvard.edu
Physician Abdul El-Sayed, a candidate for governor in Michigan, discusses “The Epidemic of Poverty: The Government Imperative.” (February 12)

“Casting—When Character Meets Appearance.” Radcliffe Institute fellow Phillip Warnell talks about his research on the metrics of screen-based acting roles. (February 21)

FILM
Harvard Film Archive
www.hcl.harvard.edu/hfa
Norton Lectures in Cinema: Frederick Wiseman. The retrospective includes *Titicut Follies*, *Primate*, *High School*, and *Near Death*, a six-hour chronicle of the medical intensive care unit at Boston’s Beth Israel Hospital. (January 19-February 18)

Kevin Jerome Everson—Cinema and the Practice of Everyday Life. The artist rebukes mainstream cinema’s pat cultural depictions and insistence on action and melodrama. Screenings include: *Tonsler Park*, *Erie*, *Company Line*, *Ninety-Three*, and *Ears, Nose, and Throat*, a film that reflects on the 2010 murder of Everson’s son. (February 2-26)

NATURE AND SCIENCE
The Arnold Arboretum
www.arboretum.harvard.edu
Arboretum director William Friedman addresses the nuanced evolutionary ties between plants and the origins of human life in **Replaying Life’s Tape Through the Lens of Plants**. (January 22)

Close and Closer: Photographs of the Arnold Arboretum by James Reis reveals studied layers of the wondrous landscape. (Opens February 9)

Events listings are also found at www.harvardmagazine.com.

LBGreen.com

800.524.7336

Like snowflakes...



LUX BOND & GREEN

JEWELERS SINCE 1898



EVERY BOX HAS A STORY

BOSTON WELLESLEY
WEST HARTFORD MOHEGAN SUN GLASTONBURY WESTPORT

Our Residents *are a lot of things.*

Knowledgeable • Philanthropic • Engaged



Tour The Commons in Lincoln and discover our activities, amenities and all that a Continuing Care Retirement Community has to offer older adults.

781-728-5297



The Commons complies with applicable Federal civil rights laws and does not discriminate on the basis of race, color, national origin, age, disability, or sex. ATENCIÓN: si habla Español, tiene a su disposición servicios gratuitos de asistencia lingüística. Llame al 1-877-920-5381. ATENÇÃO: Se fala português, encontram-se disponíveis serviços linguísticos, grátis. Ligue para 1-877-920-5381.

TheCommonsInLincoln.com



HENRIETTA'S TABLE



BENEDETTO RESTAURANT



REGATTABAR JAZZ CLUB

{ THE CHARLES HOTEL }

The Smart Place to Stay

1 BENNETT STREET • CAMBRIDGE, MA • 800.882.1818 • CHARLESHOTEL.COM



NOIR BAR & COCKTAIL LOUNGE



WELLBRIDGE ATHLETIC CLUB



CORBU SPA & SALON

Renegade Tastemakers

A Somerville museum highlights art “so bad, it’s good.”

by NELL PORTER BROWN



THIS WINTER, an exhibit of contemporary paintings in the basement of Davis Square’s Somerville Theatre features animals. *Medusa Fries Fish*, by Florida artist Christine Frank, is clearly symbolic—but of what? A wild-haired lass in a slinky red dress stands with arms extended like pale noodles, bewitching (befriending?) a perky green fish, rendered in the Japanese Pokémon tradition, lying in a pan over roaring flames. Yet the improbable enchantress is herself transfixed by a mysterious squiggled spiral in the twilight sky.

Nearby is the evocative acrylic *Woman Riding Crustacean*. Here, an explanatory label suggests that the unknown artist might have been inspired by actress Debra Winger holding her own on “a mechanical bull in the 1980 film *Urban Cowboy*,” even as the figure “appears to be a blow-up doll mounted atop a giant lobster” or “a study for a larger, hopefully more erotically realized, work.”

On display through February 25, “MOBA Zoo” is the latest show culled from more than 700 works held by the Museum of Bad Art (MOBA). “We collect compelling pieces in which something has gone wrong in the execution or the concept,” said MOBA’s curator-in-chief Michael Frank. Typically,



the works reflect either poor technique, or expertise painstakingly applied to produce hilariously overwrought results, or images that simply elicit a loud “Wow, what is that?”

“It’s not kitsch,” he emphasized. “But what is tongue-and-cheek...is that we’re not mocking the artists, we’re mocking the knitted eyebrows of the world of art criticism.” In essence, MOBA legitimately questions what, or who, makes a piece of art “important”—the idea that the “right person” has to say, “This is good”—and it has a lot of fun in the process.



Michael Frank and Louise Sacco with the stylish doggie stars of *Blue Tango* (acquired from an Indiana thrift shop) at the Somerville museum. Other highlights of the collection: *Woman Riding Crustacean*, *James* (a doleful zebra), and the masterwork that inspired it all, *Lucy in the Field with Flowers*

IT ALL BEGAN in 1994 with *Lucy in the Field with Flowers*. Boston arts and antique dealer Scott Wilson acquired the portrait of a handsome grandmother, pensively poised under an aggressively yellow sky in a wind-swept meadow, from a Boston trash heap. He’d wanted to sell its frame, but upon seeing the painting, his pal Jerry Reilly objected, using a phrase that would be repeated with gusto through the years to come by those inducted into MOBA’s guiding renegade spirit: “You can’t do that! That’s so bad, it’s good.” Reilly took the tribute to someone else’s elder and hung it in his own West Roxbury home, said his sister, Louise Sacco, MOBA’s current “permanent acting interim executive director,” during a tour of the gallery.

Word spread of Reilly’s masterpiece, and



On display at MOBA: *Medusa Fries Fish* and *Centaur and Biker* (interpreted as “An obvious comparison of two bearded men and their personal horsepower”)



others like it that he and Wilson and a few similarly inspired colleagues were soon scooping up from yard sales, thrift shops, and town dumps. But it wasn’t until “a busload of seniors from Rhode Island pulled up on his little residential street and got out to come see these,” Sacco said, “that we realized we had to do something bigger.”

Eventually they opened MOBA’s more or less permanent gallery in the Somerville Theatre, itself an historic, and beloved, place; satellite exhibit sites now exist in Brookline and Weymouth. All the locales are donated space, there’s no paid MOBA staff, and admission is free. Donations and proceeds from the sale of postcards and a catalog pay for a telephone line, website, and storage of any art that can’t fit into Frank’s house.

People from all over the world submit photos of potential works, and sometimes just mail the works themselves to MOBA, Frank said, mostly because they’ve seen its Facebook page (which has 53,000 followers) or appreciate Frank’s 28 curatorial talks (of varying educational and entertainment value) on YouTube.

Frank is picky. He accepts less than 25

percent of what’s offered by others, and acquires most of the pieces himself through the region’s thrift shops and other affordable venues. Garbage piles in May and June, when local college students are preparing to leave town, have yielded some real treasures. He also scouts around when traveling for his paid occupation, as a gig guitarist and as family entertainer Mike the Hatman. “I’ve been to Cuba a lot, and there’s a strong strain of surreal imagery there,” he said in a phone interview from his Boston living room. “So I recently picked up a piece, that I’m looking at here now, that’s pretty damn bizarre.” He guesses it’s some sort of Welsh corgi, with no legs to speak of, in a rural landscape.

A backlog of artwork awaits cataloguing and what can be his lengthy interpretation process. That might involve Google name searches for any signed pieces (although most MOBA works are by unknown artists), as well as research to contextualize a given painting by identifying other art or events that might have inspired the work. Thus *Mini-Marilyn En Pointe*, in a show entitled “Dopple-hangers” at the Weymouth gallery, is a depiction of the American actress

GODDARD HOUSE
ASSISTED LIVING®
www.goddardhouse.org

Where the heart never forgets

COME FOR A VISIT. MEET OUR STAFF. EXPERIENCE THE COMMUNITY.

A Not-For Profit Assisted Living Community

- Building Community
- Progressive Minded
- Inclusive Culture
- Socially Engaging
- Intellectually Stimulating

165 CHESTNUT STREET, BROOKLINE
WWW.GODDARDHOUSE.ORG
CALL LANCE CHAPMAN AT 617-731-8500 EXT. 105

Harvard
Art Museums

Fogg Museum
Busch-Reisinger Museum
Arthur M. Sackler Museum

Inventur— Art in Germany



1943–55

February 9–June 3, 2018

harvardartmuseums.org/inventur

and sex symbol. But what may initially resemble pigs' feet poking out from under her black dress are actually her own, attached to unseen knees bent as she's jumping up, smiling at the viewer. Frank knows this because the painting is clearly based on an image he found online by French photographer Philippe Halsman, who, in the 1950s, captured a series of famous people in mid air.

OVER THE YEARS, MOBA has had shows in New York City, Santa Fe, and Minneapolis,

as well as in Canada and Taiwan. "It was not my assumption that the irony of MOBA would translate" to Asia, Frank said, "but it seemed to be very successful, because the show was in Taipei and then moved to another city and was extended to six weeks." He's currently planning for a MOBA show in Tokyo next fall or winter.

MOBA's art is primarily representational. With abstract works, Sacco said, it's much harder to assess what artists intended to do, and if they succeeded: "To look at a Jackson

Pollock—if that reputation wasn't out there, if he wasn't a well-acknowledged genius—the first time we saw his painting, we'd say, 'Oh, someone spilled the paint—that's what went wrong.'"

What's often disconcerting in the MOBA collection is the steroidal level of symbolism. The exhibit "MOBA Zoo" features a 24-inch canvas titled *Liberty and Justice* that was donated in 2015. Frank's label reads: "Reminiscent of Judith clutching the head of Holofernes, teary-eyed Lady Liberty celebrates her victo-

ALL IN A DAY: A Wintry Jaunt to Newport, Rhode Island

As winds whip off the Atlantic Ocean and waves crash along Newport's famous Cliff Walk outside, visitors on the "Beneath The Breakers" tour meander through the labyrinthine bowels of the Vanderbilt family's Gilded Age mansion.

The tour covers the development of modern electricity and plumbing, which ran throughout the five-story, 70-room Italian Renaissance-style palazzo. It also explores the hand-dug boiler room, where two massive units once burned as much as 250 tons of coal a year. "But these are summer homes, why did they need heat?" Raymond Roy, a guide with The Preservation Society of Newport County, asks, then explains: the 5,000 feet of water pipes snaking through 20 bathrooms could freeze. "From October 1 to May 1, there were men working in the boiler room around the clock, even though the family wasn't here."



The depopulated winter season also offers contemporary Newport visitors a far quieter and often more intimate look at **The Breakers**, and at the three other estates owned and opened year-round by the preservation society: **The Elms, Marble House, and Rosecliff** (where "Pierre Cardin: 70 Years of Innovation" offers 42 original outfits from the designer's private archives through February 28). "We don't really want to grow a lot more in the summer, when the city is very, very crowded," says John G. Rodman, M.P.A. '93, director of museum experience for the society's 11 properties, which draw more than one million admissions a year. "This allows people to see the homes in a different way."



A scene from Newport's dramatic Cliff Walk (above); billiards room at the Rosecliff mansion; The Breakers; a fetching Pierre Cardin original on display at Rosecliff



With those properties open, Rodman adds, more of the city's restaurants have added winter hours, especially in conjunction with the annual **Newport Winter Festival** (February 16-25). The event—packed with magic shows, concerts, and children's activities, along with fêtes featuring food and drinks—traditionally culminates in the popular polo exhibition on Easton Beach. Also open during the winter are the **International Tennis Hall of Fame** (worth a stop even if you're not an avid fan of the sport), and the **Newport Art Museum**, where the photography shows "Lissa Rivera: Beautiful Boy" and "Domestic Affairs: Domesticity, Identity, and the Home" open on January 20. Food and drinks abound. The lively **Brick Alley Pub** has terrific comfort fare, or try the funkier **Salvation Café**; for a more refined dining option, head to the stylish new **Stoneacre Brasserie**.

The summertime hubbub and pervasive wharf-side tourist trade can also overwhelm Newport's elemental natural beauty. If the weather holds, suit up and get out on the three-mile **Cliff Walk** and exult in the salty sprays and bracing chill of New England's iconic coastal clime.

—N.P.B.



GAIL ROBERTS & TEAM

1730 Massachusetts Ave
Cambridge, MA 02138
gailroberts.com
gail@gailroberts.com
617 245-4044



VIBRANT KENDALL SQUARE — "the most innovative square mile on the planet."

- 5 architect-designed residences by ADCO Development
- Luxurious master suites with spa-inspired baths
- Well-appointed kitchens with high-end appliances
- Smart home technology and many other high-end details
- Garage parking



© 2015 Coldwell Banker Residential Brokerage. All Rights Reserved. Coldwell Banker Residential Brokerage fully supports the principles of the Fair Housing Act and the Equal Opportunity Act. Operated by a subsidiary of NRT LLC. Coldwell Banker® and the Coldwell Banker logo are registered service marks owned by Coldwell Banker Real Estate LLC. If your property is currently listed for sale, this is not intended as a solicitation. If your property is listed with a real estate broker, please disregard. It is not our intention to solicit the offerings of other real estate brokers. We are happy to work with them and cooperate fully.



The poignant exchange in *Blue Face-Green Pepper* defies explanation.

ry over the enemy and hopes peace can return to the city. In other news, her jaundiced bald eagle has caught a fish.” That sums it up, but omits the complexity of the background scenes of lower Manhattan with a military aircraft runway (from which planes and a helicopter are taking off), a ribbon of highway, and the Dali-style scales of justice dangling from the statue’s forearm. Frank resists discussing the work beyond the brief explanatory interpretation he’s attached to it. “To explain why it’s amusing or funny makes it stop being funny. I prefer to present the stuff and either you get it or you don’t.”

Sacco sees other themes within the MOBA collection. In landscapes, waterfalls

mysteriously spring up, mountains arise from flat surfaces, and trees in a natural forest march along in straight lines. Goofy designs and strange objects, or blocks of color, crop up where artists seemingly “didn’t know what to do with all that empty space on the canvas,” she says. Then there are the creative contortions to avoid rendering notoriously difficult hands and feet.

In *Safe at Home* (which hangs in Somerville), players’ hands are either roundish blobs of paint or obscured by mitts, and the umpire’s protective vest is not on his chest, but slung over his entire left arm. There are other such juxtapositions. “Someone on the Red Sox is sliding into home from first base,” Sacco pointed out, “which is as puzzling as whatever the beast is that’s eating him.”

MOBA occasionally learns of an artwork’s provenance only after it has been displayed. The strange, dream-like watercolor *He Was a Friend of Mine*, featuring an angry cat and a benign-looking husky looming in clouds overhead, was painted by a homeless man and given to a benefactor who had provided him with food and art supplies, Sacco said. “And you know if the artist was here he’d be able to

tell us exactly what he was doing, what this painting means to him.”

Years after MOBA salvaged the six-foot-square portrait *Man in Puffy Disco Hat* from a Back Bay loading dock (thanks to a call from UPS driver Bob Bean), it appeared in a newspaper article on the museum, and a woman called to say, “You’ve got a portrait of my husband.” “She came over here to see it,” said Sacco, “she and her twin sister, two little tiny ladies in their nineties, and told us that when her husband died, she had this painting made of him, from two photographs, in 1978. It had been hanging in her living room in the Back Bay and when she was downsizing she couldn’t keep it, so it went out into the trash. She was thrilled we had it—it was wonderful.” (The painting is on permanent display in Somerville because it is so heavy.)

Sacco also reported that a surprising number of artists offer to donate their own works. If turned down by MOBA, she surmises, they may believe the piece is “not that bad.” If accepted, their creation has an audience.

Bone Juggling Dog Wearing a Hula Skirt, in “MOBA Zoo,” is among three works MOBA has accepted from Mari Newman, known in

Minneapolis for her Outsider Art. The panel features a smiling ginger-bread-man-like dog, with brown fur overlaid with polka dots and with his tongue sticking out, against a background of dog bones, scores of white flowers, and swirling patterns of colors dabbed on in minute strokes. “The artist is legally blind,” Sacco explained, “so her works have a lot of detail because she can only see when she’s very close up to the canvas.” According to Sacco, Newman also has pieces in collections at the Columbus Museum of Art and the New Orleans Museum of Art.

MOBA’s works do share traits found in Outsider Art, Naïve Art, and even folk art, and sometimes it’s hard to tell what the differences really are. That begs other questions about its overlaps with fine-art criteria, Sacco said, “because we’re looking for something that engages, that gets you talking, that raises questions—you know, all of those are things that any museum will tell you they are doing.”

Malinkova, by Tatyana Lyarson (1998), was found by Frank in a Boston thrift shop in 2012, with the title (Russian for robin redbreast), artist’s name, and date on the back of the can-

vas. “The young woman’s head is slightly atilt under the weight of impossibly orange hair in this idyllic tableau,” he wrote in the accompanying label. “A tiny songbird has alighted from the dwarf tree bearing two green apples onto a one-dimensional chair, contemplating the coiffure as a potential new home.”

It’s a delightful image. Free-spirited, oddly Edwardian-looking; any number of people might like to hang it in their own home. “It really bothers me when people say things like, ‘That’s not bad, why is it here?’ ‘But, I like this!’” Frank said. “Yeah, I like it, too—that’s why I collect it. We like all these paintings. They are compelling, or we wouldn’t be doing this.”

He is also irked

by nonchalant offers to buy MOBA’s art. “From time to time people say, ‘I need this and I will pay a lot of money,’” he said. “And invariably, they offer about \$150, and I say no. We’re a museum, not a gallery,” he added. “They wouldn’t go to the MFA and say, ‘I really want that,’ and make a silly offer and expect to get anywhere. I mean, seriously, come on.”



Independent and Assisted Living
Specialized Memory Care

What do Harvard alumni
have in common?
Cadbury Commons
A Remarkable Senior Residence



The Harvard alumni who chose
Cadbury Commons may have
retired from work, but not from life.

Museum Visits • Play Reading
Symphony Selections • Lecture
Series • Yoga • Organic Gardening

Call (617) 868-0575 to arrange a personal tour,
or visit www.cadburycommons.com

66 Sherman Street, Cambridge,
MA 02140 • (617) 868-0575

LYCÉE INTERNATIONAL DE
INTERNATIONAL SCHOOL OF
BOSTON

Teaching the World®



Open House

Preschool & Kindergarten:
SATURDAY, JANUARY 20, 2018
9:30 AM - 12:00 PM

Arlington Campus: 17 Irving Street

To learn more, call 617.499.1459
or visit www.isbos.org

*Fresh Pond
Ballet*

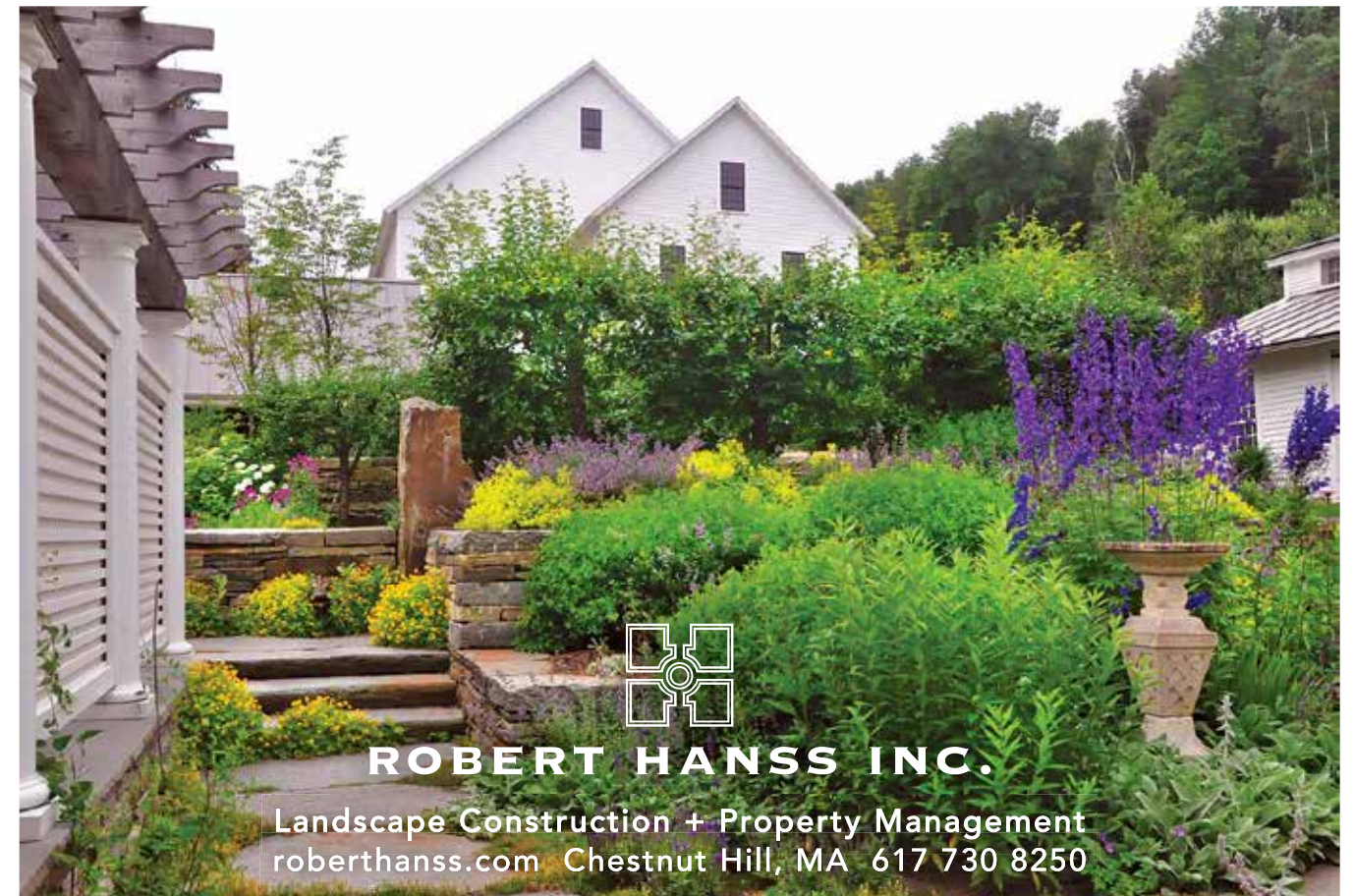


2018
Now enrolling!
New Students Welcome

Age 3, youth,
teen-adult-pointe

Visit us at:
freshpondballet.com

Nina Alonso, Director, FPB
1798a Mass Ave, Cambridge
617.491.5865



ROBERT HANSS INC.
Landscape Construction + Property Management
roberthanss.com Chestnut Hill, MA 617 730 8250

TASTES & TABLES: Pork Bao and Bubble Waffles

Chinatown's hip Shōjō serves addictive Asian-fusion tapas with a quirky Western twist. Japanese sweet-potato tots are dipped in miso tare aioli (\$8). Chicken and Hong Kong bubble waffles (a popular street-food item) come slathered with five-spice butter (\$16). And the resident hamburger, the "Shōjōnator," is housed in a steamed bao-style bun and topped with smoked bacon and "kimcheese." Shōjō is best known for its baos—pork, shrimp, and vegetarian versions—with a rich BBQ sauce, and a singularly delicious chili-cheese mess the kitchen calls "shadow-less" duck-fat, hand-cut fries (\$11).

Fresh juices and stylized cocktails complement any dish—try The Loneliest Monk (aged rum, Frangelico, pineapple, and lime juices; \$12). Shōjō also offers fine Japanese spirits and a crazy-long list of pricey whiskeys. People come to have fun. The place is run by a young generation of longtime Chinatown restaurateurs: the team's also

responsible for the ramen shop Ruckus (as in the Wu-Tang Clan song, "Bring Da Ruckus") next door, and the revamped BLR by Shōjō. All have helped revive Chinatown's reputation among a hip, young crowd. "Shōjo's a place to bring a *fun* parent," one 20-something patron said, "not like my parents." (Although anyone of any age averse to a loud, typically hip-hop, soundtrack is forewarned.)

Japanese for school-aged girl, *shōjō* is also a reference to shojo

manga, the comic books and magazines targeting that demographic—as the restaurant's graffiti-styled wall graphics, murals with warriors, dragons, mystical mountains, and other anime décor attest. Just how that theme links to the menu is not so clear, but, when distracted by friends, drinks, pounding music, and that first bite into a freshly steamed pork bao (at left), it doesn't seem to matter. ~N.P.B.



COURTESY OF SHŌJŌ

Shōjō
617-423-7888
shojoboston.com

PREMIER PROPERTIES

COMPASS

The Carol Kelly Team
wishes you a
Happy New Year!

We look forward to
serving your real estate
needs in 2018.

Thirty years of real estate expertise
serving sellers and buyers.

The Carol Kelly Team
thecarolkellyteam@compass.com
617.835.5008

PRISTINE MID-CENTURY
MODERN IN NORWOOD, MA



Just featured in Dwell who described it as "Irresistible" and "for the purist searching for an unadulterated piece of midcentury design". 2600 sq. ft., 3 bedrooms, over half an acre bordering Ellis Pond. *Exclusively Offered - \$700,000*

WWW.BARBARACURRIER.COM



THE CURRIER TEAM
Coldwell Banker
171 Huron Ave, Cambridge, MA
Call or text 617.593.7070
barbaracurrier50@gmail.com

BARBARA CURRIER • VICTORIA KENNEDY • RYAN FERRO

FEATURE
YOUR
PREMIER
PROPERTY:

Reach **80,000** readers
in New England.

It's easy – just e-mail
a photo and description to
abby_shepard@harvard.edu
and we'll format the ad for you,
or call 617-496-4032.



If you would like to list a property in our March-April issue, contact Abby Shepard: 617.496.4032.

HARVARD
MAGAZINE